

## Note: Not For Public Distribution

### 3.3: District Scenario Preferences DISTRICT 13 H3 Studio Planning Team 11-17-2006

#### I. Provide Brief Review of Scenarios

##### a. Discuss Scenarios in Abstract in Light of Contingencies

The three scenarios defined by the H3 Studio Planning Team are **RE PAIR**, **RE HAB**, and **RE VISION**

Each scenario's contingencies are outline in five parts: **funding, flooding, population growth, policy / approach, and implementation**

##### Scenario 1 **RE PAIR**:

<b>Funding:</b>	no windfall in federal or state funding
<b>Flooding:</b>	flood protection not substantially improved beyond current conditions
<b>Population Growth:</b>	stable at existing levels
<b>Policy / Approach:</b>	laissez – faire: no concerted effort at a planned strategic recovery at the district level
<b>Implementation:</b>	no time management determinant

##### Scenario 2 **RE HAB**:

<b>Funding:</b>	moderate federal and state funding becomes available
<b>Flooding:</b>	additional flood protection realized from individual resettlement decisions
<b>Population Growth:</b>	approximately pre-Katrina repopulation
<b>Policy / Approach:</b>	proactive planning with strategic public infrastructure reinvestment

**Implementation:** Approximately 10 years

**Scenario 3 *RE* VISION:**

**Funding:** moderate to high federal funding supplemented with additional sources of funding

**Flooding:** additional flood protection realized from individual, business and resettlement decisions together with the city's overall flood risk being substantially reduced

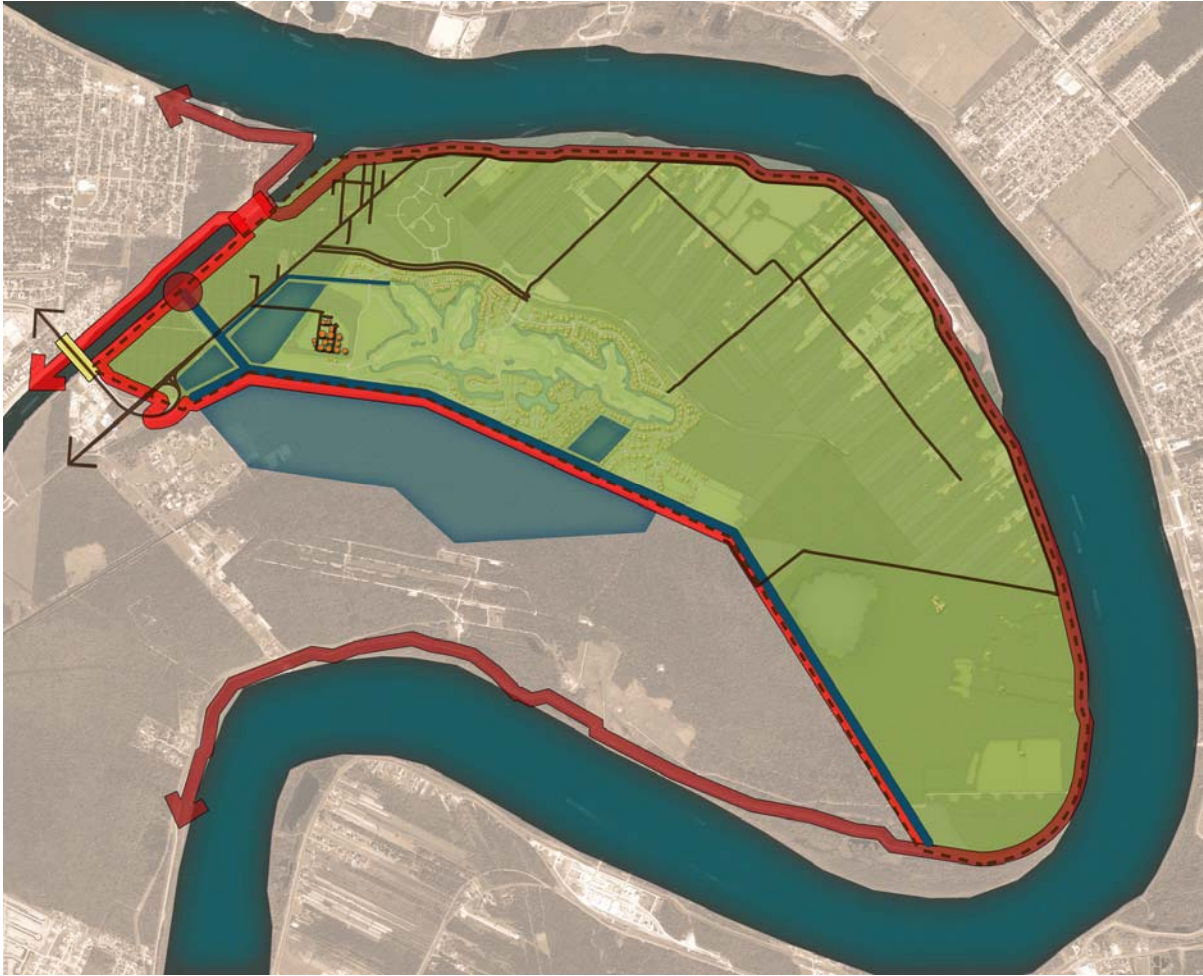
**Population Growth:** full population return, and / or exceeding pre-Katrina numbers

**Policy / Approach:** proactive planning with significant strategic public infrastructure reinvestments and community enhancement

**Implementation:** 10 years plus

b. Include Graphic / Map Overview of Scenarios

Scenario 1 **RE PAIR**





Scenario 3 **RE** VISION



## II. Review Inputs That Guide Scenario Preferences

### a. Overall Vision and Specific Guidance from Citywide team

To date, there is **NO** overall vision stated by the Citywide team, and this concerns the H3 Studio Planning Team.

The H3 Studio Planning Team has followed and completely incorporated the guidance from the Citywide team as follows:

“White Paper - Population Overview”

“White Paper - Hurricane Flood Protection”

“District Meeting #2” Powerpoint slides regarding population, hurricane flood protection, funding, and scenarios.

“Strawman Format – v3, District Meeting 2” regarding outline for incorporating Citywide information in District public meetings

### b. Input From Public Meetings

The overall preference from the community was incorporating elements from all three of the scenarios **RE HAB**, **RE PAIR** and **RE VISION**. Each of these scenarios builds upon the other, incrementally focusing on flood protection, evacuation routes, District specific emergency services, the future wish for smart growth responsive to existing context and protection of natural resources. Smart growth will need to be defined and refined by the H3 Studio Planning Team in conjunction with the community for the next Public meeting. The H3 Studio Planning Team will rename this community - driven “hybrid” scenario as **RE SILIENT**.

### III. Outline Scenario Preferences and Phasing in Light of Inputs and Contingencies

#### a. Detail Phased Implementation with Timetable

At this time, it is difficult to propose a “detailed” phase implementation with timetable for **RE SILIENT**, as the hybrid scenario has just been created as a result from community feedback from the District Public Meeting 2. However, a “preliminary” phase implementation with timetable can be alluded to as follows:

##### **0 – 5 years:**

- verify / improve levee condition to a minimum of category 3 hurricane protection around the district; this includes verifying the Mississippi River levee, the intra-coastal levee, and the Donner Canal back-levee. Also the Drainage Basin 5 perimeter levee (which includes Plaquemines Parish) needs to be assessed and verified
- verify / improve drainage & pumping facilities to ensure adequate flood protection
- improve sewerage infrastructure
- repair ditches for adequate drainage
- repair and improve all streets
- improve street networks incorporating multiple ingress / egress routes and link to alternate evacuation route through Plaquemines Parish
- create emergency services within District 13, not relying only on District 12

##### **5 – 10 years:**

- Presevation of bottomland hardwood forest and wetlands through overlay plan and study in relation to environmental hurricane mitigation
- Smart growth residential / economic development sensitive to character of District
- Addition of community facilities and services sensitive to environment

## b. Summarize Rationale for Ordering of Scenario Preferences

Three (3) overarching themes emerged as consensus from the community which spread across all three scenarios: **1) Need for adequate hurricane flood protection in relation to vulnerability of the District from future hurricanes; 2) Need for additional forms of emergency evacuation routes; and 3) Need for emergency services within the District.**

## IV. Provide Preliminary List of Recovery Projects to Accompany Scenario Preferences and Scenario Implementation

- back levee at Donner Canal to be assured / brought up to Category 3 protection
- study / verify / improve all existing hurricane and flood levee protection for entire District; this includes studying the entire Drainage basin 5, which encompasses Plaquemines Parish
- verify condition and repair area of Mississippi River levee where barge was marooned during Katrina
- repair necessary roads
- pave necessary roads
- develop a “hardened / armored utility infrastructure program”
- extend and repair existing open canal system to deal with existing drainage issues
- remove all debris
- verify / improve pumping station and overall pumping system
- verify / improve sewerage treatment plant
- provide adequate sewerage for entire District
- research and create additional evacuation routes connecting to Plaquemines Parish and District 12
- provide emergency services / sub-stations within District
- fire station at Stanton and English Turn Parkway
- add street lighting and traffic signaling
- replace broken signage
- create an environmental assessment study of the wetlands and the bottomland hardwood forests in the District as potential environmental hurricane mitigation