

## **Note: Not For Public Distribution**

### **4.1: Draft District Recovery Plan DISTRICT 13 H3 Studio Planning Team 12-22-2006**

See attached document enumerating District 2 Vision, Goals, and Principles. The goals and principles are categorized in terms of the various thematic sectors defined by the UNOP process and additional sectors added by the H3 Studio Project Team as follows:

- Leadership\***
- Flood Protection**
- Health Care**
- Ecological\* / Historic Preservation**
- Housing**
- Economic Development**
- Community Facilities**
- Education**
- Transportation**
- Infrastructure / Public Works / Debris Removal**
- Implementation \***

Within the principles of each category are recommendation in terms of **various programs** (e.g., house mitigation programs), **recovery projects** (e.g., means of emergency egress) and **community-enhancement projects** (e.g., new community center). As of yet, the document does not separate out recovery vs. community-enhancement projects, nor does is prioritize the various projects.

**\*Added by H3 Studio Project Team**

## GOALS & PRINCIPLES

### Leadership

**Goal:** Develop coordinated leadership from the neighborhoods within the District to advocate and implement plans and policies for the benefit of the greater community

### Principle

- Continue the evolution of the stakeholders as a District wide implementation committee
- Institute high-capacity community development cooperative that can receive and disburse recovery funds and grants for implementation of the plan, providing essential role for the community in recovery

### Flood Protection

**Goal:** Improve flood protection to a Category 5 protection within the District by supporting regional and city-wide flood protection studies and initiatives as well as with specific improvements within Drainage Basin Five, the District and through individual action.

**Principle:** Support regional and city-wide flood protection measures

- Monitor studies by Army Corp of Engineers
- Evaluate state of Mississippi River flood wall and levee
- Repair portion of Mississippi River levee where barge was marooned during Hurricane Katrina

**Principle:** Improve flood protect within Drainage Basin Five and District

- Ensure levee along Intracoastal canal and on Plaquemines Parish side of Donner Canal at continuous height of 9.5 feet; conduct study to ensure height is adequate to sustain hurricane storm surge
- Ensure that current pump station at Intracoastal Canal is at adequate capacity to protect District from flooding
- Study potential for existing wetlands and bottomland hardwood forests to serve as mitigation
- Clean out all drainage basins and ditches to ensure clear of all obstructions
- Construct safe house at pumping station

**Principle:** Individual property owners in high risk zones are encouraged to reduce flood risk through participation in one or more of the comprehensive residential home mitigation programs

- Develop / fund a voluntary and incentive based:
  - "Home Flood Mitigation & Raising Program" in high risk zones
  - "Hurricane and Sustainable Building Standards Program" to use sustainable materials and build to Hurricane standards
  - "Home Rain Garden Program" to install rainwater catchment systems, and site design and landscape standards within individual properties
  - "Hardened Infrastructure Program"

### Public Safety

**Goal:** Public safety service will improve and become more visible within the District, to address both the perception and reality of creating a safe and more livable community. Potential for a police, fire and emergency services substation will be located on high ground within the District, respecting the existing natural character of the area. The main headquarters and dispatch stations for police, fire and emergency services will remain within the neighboring District 12; however, the proximity of a sub-station will benefit all residents. An alternate means of egress will be

## GOALS & PRINCIPLES

developed within the District, as the only public entry / exit point is at the bridge over the Intracoastal Canal connecting to District 12.

**Principle:** Create emergency services in the District

- Locate police and fire substation with emergency services in District
  - Option 1: in Riverside area along Mississippi River on higher topography; however, not centrally located, but will still adequately serve the needs of the entire District
  - Option 2: at intersection of English Turn Parkway and Stanton; however, though this intersection is centrally located, it falls within the low topographic FEMA advisory high risk zone and within designated wetland zone

**Principle:** Create alternate modes of egress within the District

- Locate evacuation staging area along levee in Riverside area, with boat launching area, utilizing the Mississippi River as means of egress, and helipad
- Current Woodland Highway only means of ingress and egress passes through low topographic FEMA high risk zone in the Riverside area between English Turn Parkway and the bridge over the Intracoastal Canal to District 12. Conduct thorough study to determine necessity for built-up causeway between these points to avoid flood inundation and subsequent blocked egress route.
- Conduct study determining alternate modes of egress from downriver portion of District
  - Option 1: In times of emergency, Audubon Institute and US Coast Guard to open its gates to allow for emergency egress along Patterson Road along Mississippi River levee to connect to Plaquemines Parish and beyond to Belle Chase Highway and alternate routes outside District 13. Connect current dead-end condition of Willow to Wilderness Park and existing perimeter road of Audubon Institute, in turn connecting to Patterson. Relocate fence of Audubon Institute to allow public access. Construct new road on Audubon Institute side of fence for private use.
  - Option 2: In addition to Option 1 recommendations, extend English Turn Parkway either to Delacroix or Wilderness Park; connect English Turn Parkway to Plaquemines Parish over Donner Canal levee

**Principle:** Support public safety monitoring in the District

- Regulate use of all-terrain vehicles along levee
- Create strategy to decrease incidence of vandalism and dumping

### Health Care

**Goal:** Health care for residents of District 13 will primarily remain located outside of the District; however, emergency services will move into the District to ensure the safety of the community.

**Principle:** Establish emergency service (EMT) station in District

- Locate the emergency services with the police and fire substation on high ground in the Riverside area near the Mississippi River

### Ecological / Historic Preservation

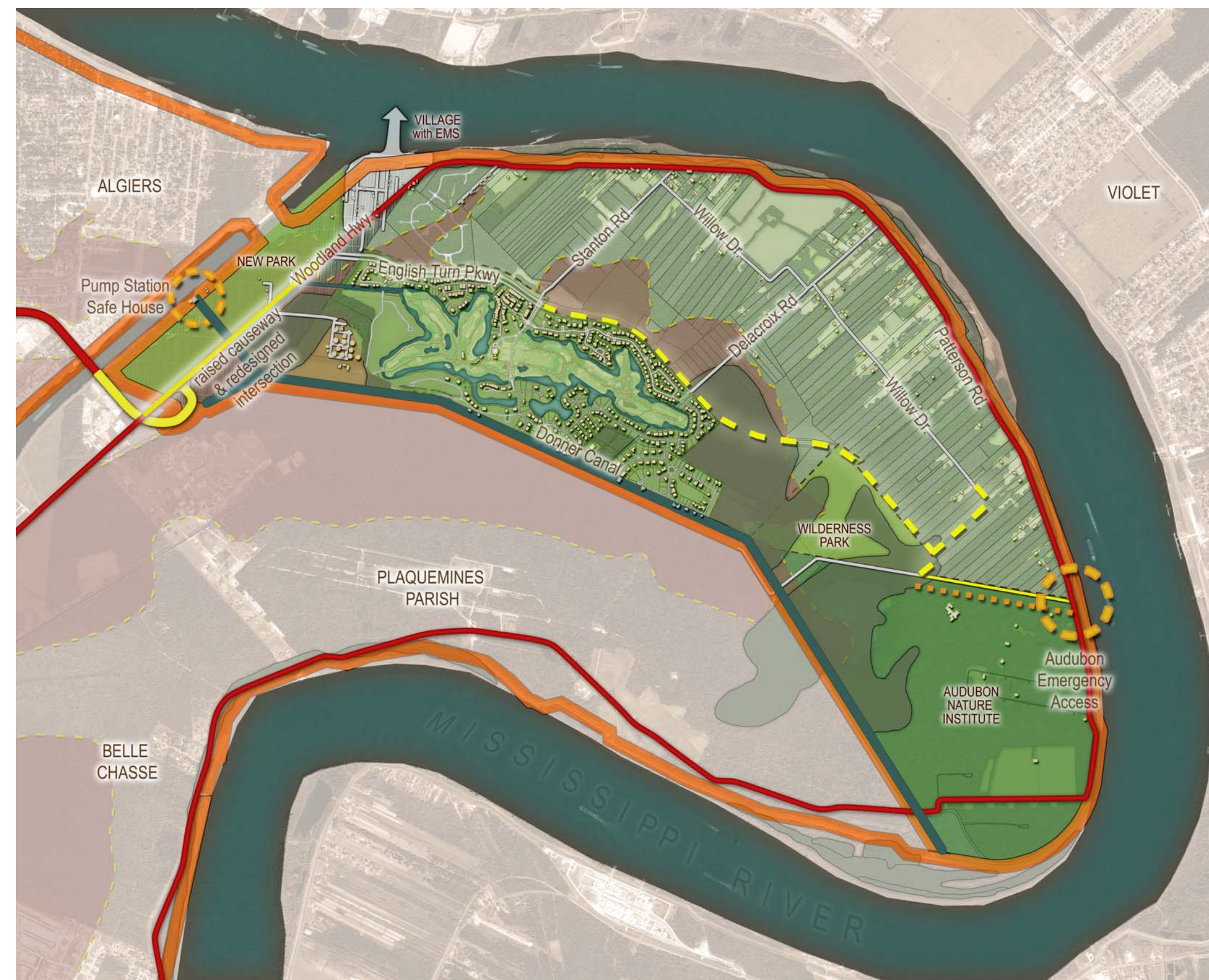
**Goal:** Ecological and Historic preservation will allow the District to maintain its unique character. District 13 is endowed with a wealth of ecological assets, including the bottomland hardwood forest and natural wetlands; therefore, development must be controlled strictly to preserve the ecological character. Additionally, District 13 historic landmarks, such as the Stanton Sugar Plantation will remain unharmed cultural sites.

**Principle:** The existing ecological and historic assets are to be retained

- Complete environmental assessment and impact study of wetlands and bottomland hardwood forest in District, including potential for environmental hurricane and flood mitigation strategy
- Create continuous loop of wetlands and natural corridor system, connecting low areas of Riverside, area between English Turn Golf Course Community and higher ground parallel to River, area between English Turn Golf Course Community and Wilderness Park

## VISION

The vision for District 13 is a community that promotes responsible development, respecting the District's unique natural and cultural assets supported by the necessary infrastructure (levees, roads, drainage, utilities, and emergency services) for a safe and low risk environment. The District shall be provided adequate emergency services and alternate modes of emergency egress. Likewise the residents express a strong desire to be included in all future development decisions within the District.



## GOALS & PRINCIPLES

- connecting to Plaquemines Parish, English Turn Golf Course Community and the Donner Canal / Plaquemines Parish line
- Preserve the area between bature and levee
- Ensure continued preservation of wildlife at Wilderness Park if the park becomes accessible to the public.

### Housing

**Goal:** Housing within District 13 will develop as required by future population changes; however, all development will proceed dictated by the existing character of the District.

**Principle:** Promote smart residential growth within the auspices of landscape ecology

- Encourage future development to remain at low-density and zoned for single-family estate-sized lots
- Encourage three (3) concepts of Smart Growth:
  - Village Concept:** limit residential development to small portion of high land in Riverside area near Mississippi River levee and Intracoastal canal. Other uses such as small neighborhood commercial and emergency services will add to the mixed use village concept
  - Consolidated subdivisions in a "mosaic pattern":** Carefully planned neighborhoods developed on the high ground near River to fall within connected natural ecological corridors
  - Rural character:** Continue existing French plantation layout pattern, with single-family houses at high ground near River and lots extending to wetlands and parkland beyond
- Strengthen NORAs ability to get blighted houses into private ownership
- Develop and distribute Hurricane standard building codes that demonstrate the need for "FEMA Plus" standards of mitigation and the necessary building techniques
- Enhance code enforcement by staffing building permit and inspection departments with trained and qualified personnel

### Economic Development

**Goal:** Economic Development will occur on a small scale within District 13 in order to support the surrounding residential community. All development will be neighborhood-based, built at an appropriate scale and follow the standards of Smart Growth. The high land closest to the Intracoastal Canal is the most viable and least intrusive location for businesses.

**Principle:** If supported by residents, promote small-scale neighborhood retail

- Encourage economic development sensitive to existing character and environment of District
- Neighborhood retail development located in village area on high ground of Riverside
- No big-box development

### Community Facilities (parks / community centers)

**Goal:** Community facilities, such as parks, community centers and libraries, will be incorporated into the fabric of District 13 as needed. Unless the population of District 13 increases dramatically, most of these services can remain located in District 12.

**Principle:** If supported by residents, promote small-scale community facilities

- Encourage community facilities sensitive to existing character and environment of District
- Community facilities to be located in village area of the high ground of Riverside
- Develop meeting place for residents of District

## GOALS & PRINCIPLES

- Create public access to Wilderness Park
- Create public park in low topographic zone in Riverside area along Intracoastal Canal

### Education

**Goal:** Students living in District 13 travel to other Districts for both public and private schooling. The current population of District 13 could not support a full sized elementary, middle & high school.

### Transportation

**Goal:** Transportation routes through District 13 will improve based both on the daily and emergency needs of the community. Roads will be resurfaced and other improvements such as roadway expansion, shoulder improvements and straightening of dangerous curves will ensure the safety of all drivers within the District.

**Principle:** Transportation should be improved in best interest of public safety but also in keeping with existing character of District.

- Study expansion and environmental impact of English Turn Parkway to either Delacroix or Wilderness Park
- Study altering classification of Patterson Road to a State Road
- Raise Woodland Highway in low topographic portion of Riverside to allow safe egress to bridge to District 12
- Study removal of dangerous curves and intersections throughout District

### Infrastructure / Public Works / Debris Removal

**Goal:** A hardened utility infrastructure program in addition to debris removal initiatives and landscape enhancements will improve the quality of life throughout the District. The streets will be repaired or rebuilt as necessary, the drainage systems will be cleared of debris and streetscape maintenance will be improved to ensure safety for all residents. These projects will all be appropriately coordinated.

**Principle:** Infrastructure conditions of streets and public works are to be improved to acceptable conditions.

- Develop a "hardened / armored utility infrastructure program"
- Study supplying sewerage infrastructure to entirety of District
- Replace broken street signage
- Repair all street surfacing - prioritize repair to Patterson and Stanton Roads as needed evacuation routes
- Remove debris, abandoned cars, etc.

### Implementation

**Principle:** Advocate for a city-wide master plan with zoning given the force of law

