

District 13
Draft District Recovery Plan



UNIFIED NEW ORLEANS PLAN
FOR RECOVERY & REBUILDING

H3 STUDIO PROJECT TEAM

DECEMBER 22, 2006

H3

District 13 Draft District Recovery Plan Summary

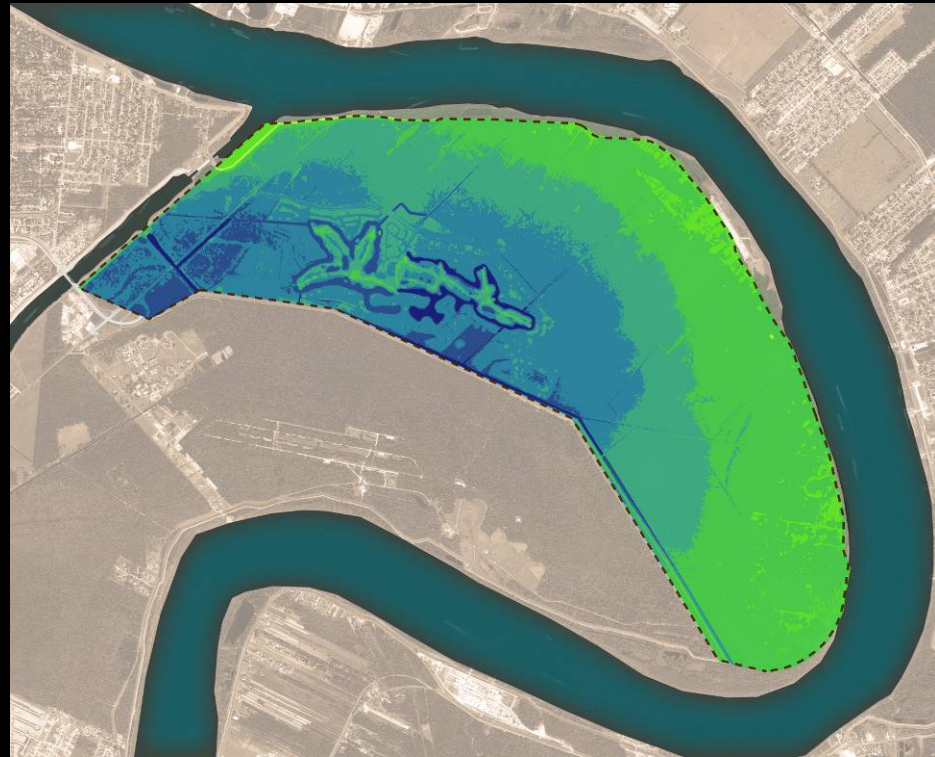
status

district did not flood

pre-katrina population was 1,147

current population is approx. 900
– 78% of pre-katrina population

majority has returned, and
expected to slowly return



H3

District 13 Draft District Recovery Plan Summary

community defined needs

provide flood protection (district not tested by katrina, but is vulnerable)

provide emergency egress (district is a dead-end)

woodland highway in high-risk low topography

no emergency services within district

poor street conditions

no district-wide sewerage

debris (dumping)

poor drainage (blocked ditches)

ecological preservation (wetlands and bottomland hardwood forests fall in low topographic areas)

concern over incompatible growth



District 13 Draft District Recovery Plan Summary

vision

the vision for district 13 is a community that promotes responsible development, respecting the district's unique natural and cultural assets supported by the necessary infrastructure (levees, roads, drainage, utilities, and emergency services) for a safe and low risk environment.



H3

District 13 Draft District Recovery Plan Summary

scenarios & levels of

RECOVERY

funding – flooding – population – policy – implementation

REPAIR



REHAB



REVISION



REHAB +
recovery strategy:

beyond infrastructure repair and improvements, focus on recovering in a manner that is safer from disasters and improves the quality of life for all residents

District 13 Draft District Recovery Plan Summary

goals & principles

leadership - flood protection - housing - historic preservation - economic development - community facilities
education - health care - public safety - transportation - infrastructure - implementation

DISTRICT 13

GOALS & PRINCIPLES

Leadership

Goal: Develop coordinated leadership from the neighborhoods within the District to advocate and implement plans and policies for the benefit of the greater community.

- Continue the success of the initiatives as a District-wide implementation committee
- Increase high standards community development cooperation for job creation and decrease reliance on state and federal for implementation of the plan providing emergency risk for the community in recovery

Flood Protection

Goal: Improve flood protection to a Category 3 protection within the District by supporting regional and city-wide flood protection studies and initiatives as well as with specific improvements within Drainage Basin Five, the District and through individual action.

- Support regional and city-wide flood protection measures
- Increase state of knowledge from local and state
- Support projects of knowledge from local and state
- Support projects of knowledge from local and state

Public Safety

Goal: Public safety services will improve and become more visible within the District, to address both the perception and reality of creating a safe and more livable community. Potential for a police, fire and emergency services substation will be located on high ground within the District, preserving the existing natural character of the area. The main headquarters and dispatch stations for police, fire and emergency services will remain within the neighboring District 12; however, the presence of a sub-station will benefit all residents. An alternate means of egress will be

- Develop a sub-station for police, fire and emergency services
- Increase state of knowledge from local and state
- Support projects of knowledge from local and state

Principle: Individual property owners in high risk zones are encouraged to reduce flood risk through participation in one or more of the comprehensive residential home mitigation programs

- District Flood Mitigation Program
- Home Flood Mitigation Program
- Flood Mitigation Program
- Flood Mitigation Program

Ecological / Historic Preservation

Goal: Ecological and historic preservation will allow the District to maintain its unique character. District 13 is endowed with a wealth of ecological assets, including the botanical/historical forest and natural wetlands. Therefore, development must be controlled strictly to preserve the ecological character. Additionally, District 13 historic landmarks, such as the Slattery Sugar Plantation will remain unaltered cultural sites.

- Support environmental assessment and report study of wetlands and historical landmarks in District, including projects for environmental tourism and flood mitigation
- Create historical map of wetlands and other critical areas, identifying the areas of historical and natural significance and high ground in District

Health Care

Goal: Health care for residents of District 13 will primarily remain located outside of the District; however, emergency services will move into the District to ensure the safety of the community.

- Establish emergency service (EMT) stations in District
- Locate the emergency service (EMT) station on high ground in the District

Economic Development

Goal: Economic development will occur on a small scale within District 13 in order to support the surrounding residential community. All development will be neighborhood based, built at an appropriate scale and follow the standards of Saint George.

- Support small-scale development within District
- Support small-scale development within District

GOALS & PRINCIPLES

Leadership

Goal: Develop coordinated leadership from the neighborhoods within the District to advocate and implement plans and policies for the benefit of the greater community.

- Continue the success of the initiatives as a District-wide implementation committee
- Increase high standards community development cooperation for job creation and decrease reliance on state and federal for implementation of the plan providing emergency risk for the community in recovery

Flood Protection

Goal: Improve flood protection to a Category 3 protection within the District by supporting regional and city-wide flood protection studies and initiatives as well as with specific improvements within Drainage Basin Five, the District and through individual action.

- Support regional and city-wide flood protection measures
- Increase state of knowledge from local and state
- Support projects of knowledge from local and state
- Support projects of knowledge from local and state

Public Safety

Goal: Public safety services will improve and become more visible within the District, to address both the perception and reality of creating a safe and more livable community. Potential for a police, fire and emergency services substation will be located on high ground within the District, preserving the existing natural character of the area. The main headquarters and dispatch stations for police, fire and emergency services will remain within the neighboring District 12; however, the presence of a sub-station will benefit all residents. An alternate means of egress will be

- Develop a sub-station for police, fire and emergency services
- Increase state of knowledge from local and state
- Support projects of knowledge from local and state

Principle: Individual property owners in high risk zones are encouraged to reduce flood risk through participation in one or more of the comprehensive residential home mitigation programs

- District Flood Mitigation Program
- Home Flood Mitigation Program
- Flood Mitigation Program
- Flood Mitigation Program

Ecological / Historic Preservation

Goal: Ecological and historic preservation will allow the District to maintain its unique character. District 13 is endowed with a wealth of ecological assets, including the botanical/historical forest and natural wetlands. Therefore, development must be controlled strictly to preserve the ecological character. Additionally, District 13 historic landmarks, such as the Slattery Sugar Plantation will remain unaltered cultural sites.

- Support environmental assessment and report study of wetlands and historical landmarks in District, including projects for environmental tourism and flood mitigation
- Create historical map of wetlands and other critical areas, identifying the areas of historical and natural significance and high ground in District

Health Care

Goal: Health care for residents of District 13 will primarily remain located outside of the District; however, emergency services will move into the District to ensure the safety of the community.

- Establish emergency service (EMT) stations in District
- Locate the emergency service (EMT) station on high ground in the District

Economic Development

Goal: Economic development will occur on a small scale within District 13 in order to support the surrounding residential community. All development will be neighborhood based, built at an appropriate scale and follow the standards of Saint George.

- Support small-scale development within District
- Support small-scale development within District

VISION

The vision for District 13 is a community that promotes responsible development, respecting the District's unique natural and cultural assets supported by the necessary infrastructure (sewers, roads, drainage, utilities, and emergency services) for a safe and low risk environment. The District shall be provided adequate emergency services and alternate modes of emergency egress. Likewise the residents express a strong desire to be included in all future development decisions within the District.



GOALS & PRINCIPLES

Leadership

Goal: Develop coordinated leadership from the neighborhoods within the District to advocate and implement plans and policies for the benefit of the greater community.

- Continue the success of the initiatives as a District-wide implementation committee
- Increase high standards community development cooperation for job creation and decrease reliance on state and federal for implementation of the plan providing emergency risk for the community in recovery

Flood Protection

Goal: Improve flood protection to a Category 3 protection within the District by supporting regional and city-wide flood protection studies and initiatives as well as with specific improvements within Drainage Basin Five, the District and through individual action.

- Support regional and city-wide flood protection measures
- Increase state of knowledge from local and state
- Support projects of knowledge from local and state
- Support projects of knowledge from local and state

Public Safety

Goal: Public safety services will improve and become more visible within the District, to address both the perception and reality of creating a safe and more livable community. Potential for a police, fire and emergency services substation will be located on high ground within the District, preserving the existing natural character of the area. The main headquarters and dispatch stations for police, fire and emergency services will remain within the neighboring District 12; however, the presence of a sub-station will benefit all residents. An alternate means of egress will be

- Develop a sub-station for police, fire and emergency services
- Increase state of knowledge from local and state
- Support projects of knowledge from local and state

Principle: Individual property owners in high risk zones are encouraged to reduce flood risk through participation in one or more of the comprehensive residential home mitigation programs

- District Flood Mitigation Program
- Home Flood Mitigation Program
- Flood Mitigation Program
- Flood Mitigation Program

Ecological / Historic Preservation

Goal: Ecological and historic preservation will allow the District to maintain its unique character. District 13 is endowed with a wealth of ecological assets, including the botanical/historical forest and natural wetlands. Therefore, development must be controlled strictly to preserve the ecological character. Additionally, District 13 historic landmarks, such as the Slattery Sugar Plantation will remain unaltered cultural sites.

- Support environmental assessment and report study of wetlands and historical landmarks in District, including projects for environmental tourism and flood mitigation
- Create historical map of wetlands and other critical areas, identifying the areas of historical and natural significance and high ground in District

Health Care

Goal: Health care for residents of District 13 will primarily remain located outside of the District; however, emergency services will move into the District to ensure the safety of the community.

- Establish emergency service (EMT) stations in District
- Locate the emergency service (EMT) station on high ground in the District

Economic Development

Goal: Economic development will occur on a small scale within District 13 in order to support the surrounding residential community. All development will be neighborhood based, built at an appropriate scale and follow the standards of Saint George.

- Support small-scale development within District
- Support small-scale development within District

GOALS & PRINCIPLES

Leadership

Goal: Develop coordinated leadership from the neighborhoods within the District to advocate and implement plans and policies for the benefit of the greater community.

- Continue the success of the initiatives as a District-wide implementation committee
- Increase high standards community development cooperation for job creation and decrease reliance on state and federal for implementation of the plan providing emergency risk for the community in recovery

Flood Protection

Goal: Improve flood protection to a Category 3 protection within the District by supporting regional and city-wide flood protection studies and initiatives as well as with specific improvements within Drainage Basin Five, the District and through individual action.

- Support regional and city-wide flood protection measures
- Increase state of knowledge from local and state
- Support projects of knowledge from local and state
- Support projects of knowledge from local and state

Public Safety

Goal: Public safety services will improve and become more visible within the District, to address both the perception and reality of creating a safe and more livable community. Potential for a police, fire and emergency services substation will be located on high ground within the District, preserving the existing natural character of the area. The main headquarters and dispatch stations for police, fire and emergency services will remain within the neighboring District 12; however, the presence of a sub-station will benefit all residents. An alternate means of egress will be

- Develop a sub-station for police, fire and emergency services
- Increase state of knowledge from local and state
- Support projects of knowledge from local and state

Principle: Individual property owners in high risk zones are encouraged to reduce flood risk through participation in one or more of the comprehensive residential home mitigation programs

- District Flood Mitigation Program
- Home Flood Mitigation Program
- Flood Mitigation Program
- Flood Mitigation Program

Ecological / Historic Preservation

Goal: Ecological and historic preservation will allow the District to maintain its unique character. District 13 is endowed with a wealth of ecological assets, including the botanical/historical forest and natural wetlands. Therefore, development must be controlled strictly to preserve the ecological character. Additionally, District 13 historic landmarks, such as the Slattery Sugar Plantation will remain unaltered cultural sites.

- Support environmental assessment and report study of wetlands and historical landmarks in District, including projects for environmental tourism and flood mitigation
- Create historical map of wetlands and other critical areas, identifying the areas of historical and natural significance and high ground in District

Health Care

Goal: Health care for residents of District 13 will primarily remain located outside of the District; however, emergency services will move into the District to ensure the safety of the community.

- Establish emergency service (EMT) stations in District
- Locate the emergency service (EMT) station on high ground in the District

Economic Development

Goal: Economic development will occur on a small scale within District 13 in order to support the surrounding residential community. All development will be neighborhood based, built at an appropriate scale and follow the standards of Saint George.

- Support small-scale development within District
- Support small-scale development within District



DISTRICT MEETING #3 DECEMBER 15, 2006

H3 STUDIO / WAGGONER & BALL

CITY OF NEW ORLEANS, LOUISIANA



FOR MORE INFORMATION ABOUT UNOP, PLEASE VISIT WWW.INFORMATION@UNOP.ORG OR CALL (504) 586-1000. VISIT OUR WEBSITE AT WWW.CITYOFNO.COM. THE UNOP IS A PARTNER OF THE UNOP FOUNDATION, THE GREATER NEW ORLEANS FOUNDATION, AND THE REBUILDING KATrina FUND.

District 13 Draft District Recovery Plan Summary

recovery projects

- ~ ensure mississippi, donner canal and intracoastal levee adequate
- ~ ensure status of pumping station and construct safe house
- ~ raise woodland highway in low topographic zone to ensure safe egress & tie into proposed bridge ramp reconfiguration
- ~ open private entrance at audubon institute & coast guard in times of emergency
- ~ eliminate dead-end streets
- ~ develop armored utility infrastructure program
- ~ provide police / fire / emergency services on high ground in district or district 12; include boat launch/ helicopter pad
- ~ clean out ditches and remove debris
- ~ conduct study for wetlands and bottomland hardwood forest as flood mitigation strategy
- ~ develop hurricane "fema plus" building codes



District 13 Draft District Recovery Plan Summary

community improvement projects

- ~ future development not allowed in low topographic zones and designated wetland areas
- ~ create continuous loop of wetlands and natural corridor system
- ~ include community meeting place & appropriately scaled retail in addition to emergency services
- ~ study extension of english turn parkway to delacroix or wilderness park in relation to low topography and wetlands
- ~ provide public access to wilderness park (no consensus)
- ~ provide sewerage services to entire district (no consensus)

